

DUAL STACK

OMS[®] v4.5.1 + OMS[®] over LoRaWAN[®] (TR06)

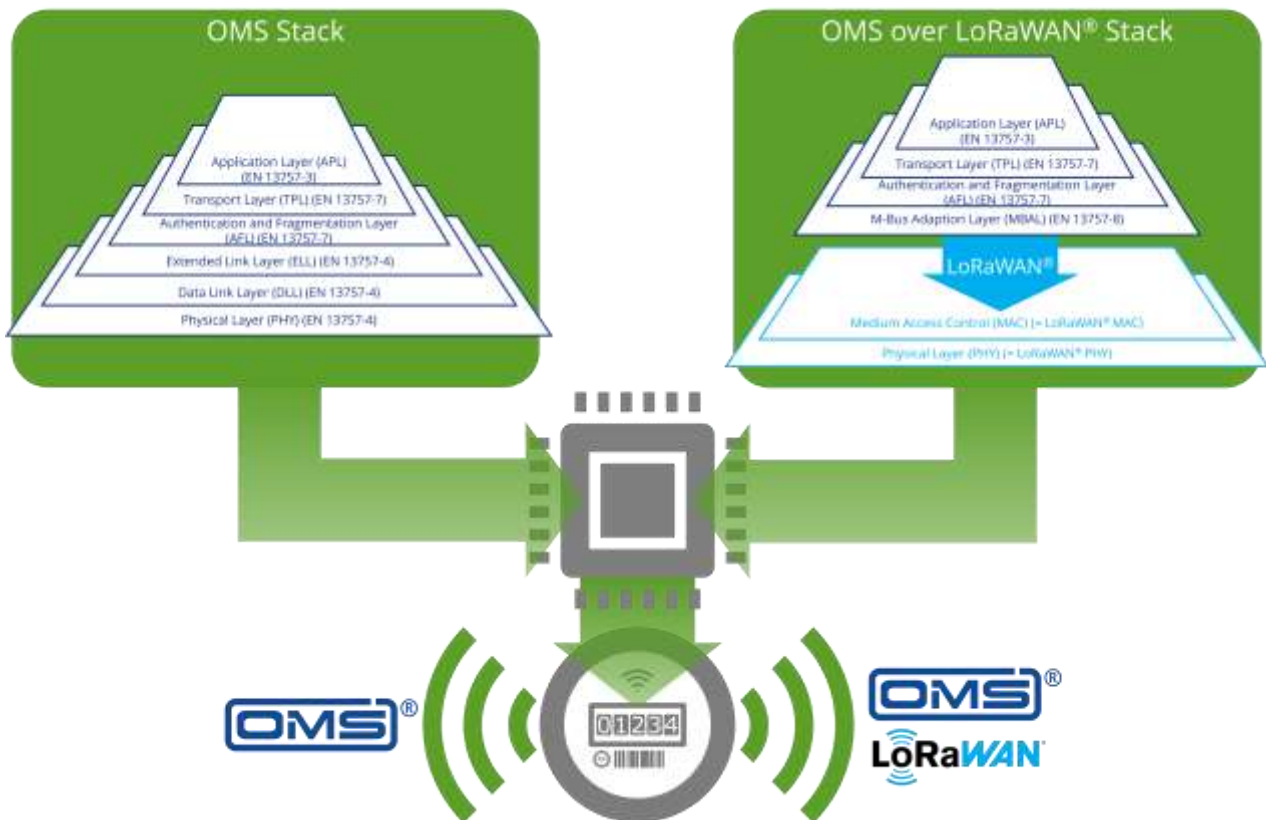
Smart utilities need more than a good network. They need a great connection with the best possible flexibility for different application scenarios. Why not offer your customers exactly that?

By integrating our dual stack for end points, you enable your customers to have interoperable devices with the latest OMS[®] v4 and TR06 specified communication.

OMS over LoRaWAN[®] defines how OMS[®] compliant data packets can be exchanged bidirectionally via LoRaWAN[®].

The dual stack enables both remote meter reading via fixed networks and via walk-by/drive-by to ensure 100% data collection.

Take advantage of these standards in your product development – this way you can meet your customers' requirements with strong OMS[®] solutions.



Seamless switching between stacks ensures maximum flexibility



Remote meter reading enabling fixed networks and walk-by/drive-by



Ease of integration of LoRaWAN[®] into the OMS[®] world



Pre-certification on reference hardware platform

SUPPORTED SPECIFICATIONS

OMS® v.4.5.1 Protocol Stack compliant according

- EN 13757 (Wireless M-Bus)
- Open Metering Standard (OMS®)

OMS® over LoRaWAN® Protocol Stack compliant according

- LoRaWAN® v1.0.4
- OMS® over LoRaWAN® (acc. to TR06 v2.0.8) specification

STACK FEATURES

- Switching of stacks “on the fly”
- User-defined protocol priority to be set for each possible state of a system
- Compile time selection of stacks
- Open platform driver enabling customizations (e.g., radio frequency)

New in the OMS® v4.5.1 stack

- Enable optimization of TRX timing
- Security profile D

OMS® over LoRaWAN®

- OMS® Up- & Downlink via LoRaWAN®
- Security profiles A, B & D

REFERENCE HARDWARE

ST Nucleo-WL55JC (STM32WL55JC)

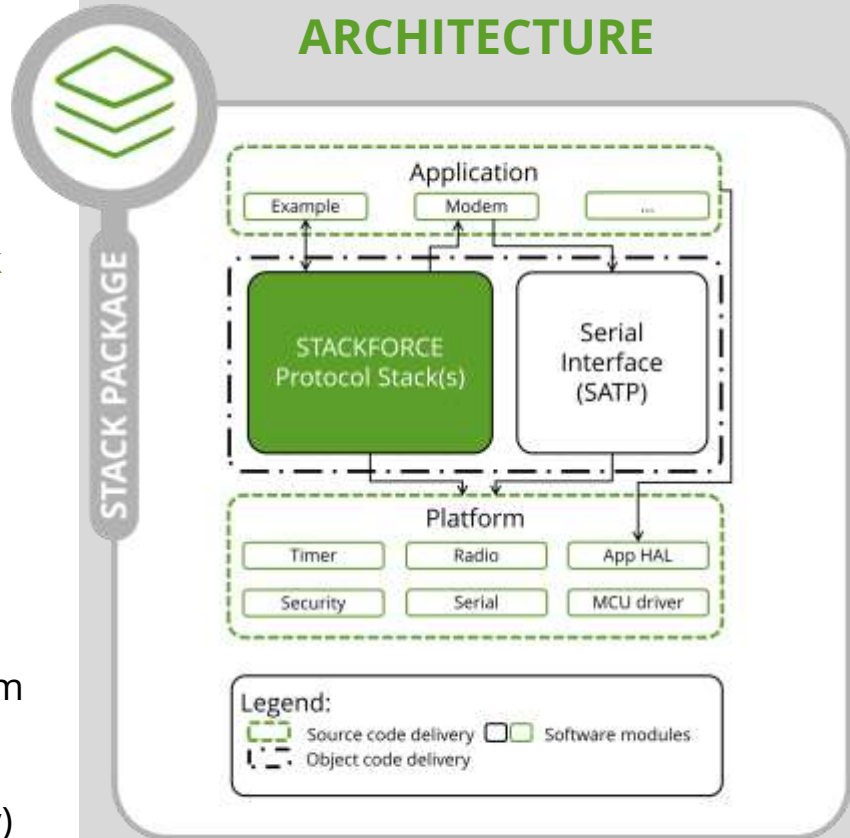
STACK CHARACTERISTICS

Memory Requirements*

	Library	Applications, HAL, Drivers, other software
Flash	~ 89 kB	~ 25 kB
RAM	~ 6 kB	~ 7 kB

* The code sizes described above specify the typical required memory for operating the full featured protocol stack as a library including related drivers. Values based on reference hardware. The RAM requirements for LoRaWAN® FUOTA are not included in the values, as these are very dependent on the application.

STACK PACKAGE ARCHITECTURE



YOUR BENEFITS

- ✓ Optimized footprint when using a dual stack compared to using two single stacks
- ✓ Platform Interface enabling customization and fine tuning of Platform Driver
- ✓ Customization of radio settings based on open platform
- ✓ With a directly available Dual Stack OMS® & OMS® over LoRaWAN® Standard Stack you shorten your time-to-market significantly.